

livesound

portablesound

installedsound

# IMPACT 65T passive 2-way loudspeaker

## Features

- Compact gas-filled injection-moulded enclosure
- Wall bracket with integral electrical connections
- Paintable enclosure
- OmniMount™ compatible
- Passive crossover

## Applications

- Cafés and bars
- Restaurants
- Retail shops
- Sports and leisure
- Discotheques and clubs
- Themed environments
- Houses of Worship

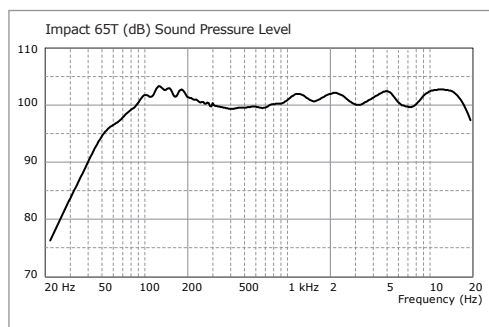


**The Impact 65T is a passive two-way loudspeaker using two 5" low frequency drive units matched to two 1" neodymium ferrofluid cooled HF tweeters with an internal passive crossover network and including an internal line transformer.**

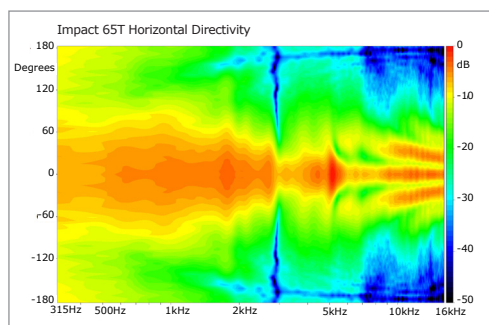
The Impact 65T will provide high quality sound reproduction from an unobtrusive cabinet, available in black or white and designed to blend effectively into any decor. It is supplied with a multi-tapped internal line transformer for use in 70 volt line and 100 volt line distributed systems, and includes a low impedance setting. The low frequency range of the Impact 65T can easily be extended with the TSB-110. The Impact 65T is supplied with an adjustable wall mounting bracket which provides the loudspeaker connections as an integral part of the bracket assembly. This facility allows the brackets to be sited, installed and wired independently of the loudspeakers being available on-site, making the final installation and commissioning of the loudspeaker system a greatly simplified and considerably faster process. The cabinet also provides M6 fixings for use with CB-10 wall brackets, WB-10 ceiling brackets and OmniMount™ brackets. A 3/8" threaded insert is provided behind an EPDM rubber cover on the bottom of the cabinet for use with microphone stands as a spot monitor.

## Impact series

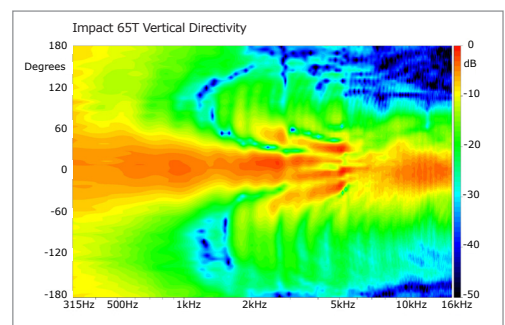
### Frequency Response



### Impact 65T Horizontal Directivity



### Impact 65T Vertical Directivity



**TURBOSOUND Ltd**  
Star Road  
Partridge Green  
West Sussex  
RH13 8RY  
United Kingdom

t: +44 (0)1403 711447

f: +44 (0)1403 710155

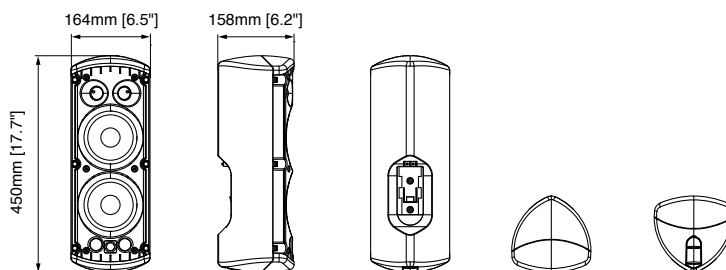
e: [techsupport@turbosound.com](mailto:techsupport@turbosound.com)

w: [www.turbosound.com](http://www.turbosound.com)

# IMPACT 65T

passive 2-way loudspeaker

<b>DIMENSIONS (HxWxD)</b>	450mm x 164mm x 158mm (17.7" x 6.5" x 6.2")	
<b>NET WEIGHT</b>	5kg (11lbs)	
<b>COMPONENTS</b>	2 x 5" (127mm) LF drivers, 2 x 1" (25mm) ferrofluid-cooled neodymium HF tweeters	
<b>FREQUENCY RESPONSE</b>	74Hz – 18kHz ±3dB, 43Hz – 20kHz ±10dB	
<b>NOMINAL DISPERSION</b>	100°H x 70°V @ -6dB points	
<b>POWER HANDLING</b>	120 watts continuous, 240 watts program	
<b>SENSITIVITY</b>	90dB SPL, 1 watt @ 1metre	
<b>MAXIMUM SPL</b>	111dB continuous, 117dB peak	
<b>IMPEDANCE</b>	8 ohms	
<b>TRANSFORMER TAPS</b>	Transformer taps at 60 watts, 30 watts, 15 watts (100v line); 60 watts, 30 watts, 15 watts, 7.5 watts (70v line), and low impedance setting	
<b>CROSSOVER</b>	Internal passive crossover at 4.5kHz, 12dB/octave	
<b>CONSTRUCTION</b>	Gas injected, glass filled moulded ABS enclosure	
<b>GRILLE</b>	Powder-coated galvanised perforated steel	
<b>MOUNTING</b>	(2) M6 fixing points for WB-5 wall bracket (supplied). Compatible with Turbosound WB-10 wall brackets and CB-10 ceiling brackets, and OmniMount™ brackets	
<b>CONNECTORS</b>	Colour coded binding posts	
<b>STANDARDS</b>	Fire retardant to V0 ABS	
<b>OPTIONS</b>	Available colours: White, Black	
<b>SPARES AND ACCESSORIES</b>	LS-51	LF driver
	TW-52	HF tweeter
	MG-IMP65	Metal grille, black or white
	WB-5	Adjustable wall bracket
	WB-10	Wall bracket
	CB-10	Ceiling bracket
<b>MORE INFO</b>	More information can be found on our website: <a href="http://www.turbosound.com">www.turbosound.com</a>	



### Limited Warranty

Every Turbosound loudspeaker product is warranted to the original end-user purchaser and all subsequent owners for a period of two (2) years for loudspeaker products, or one (1) year for electronics products, from the original date of purchase. Warranty coverage includes defects in materials and workmanship. It does not include:

- damage caused by accident, misuse, abuse, neglect or modification by any other person other than an authorised Turbosound representative,
- damage caused by overdriving, use with unsuitable amplifiers or amplifier failure,
- damage caused by failure to operate the product in accordance with the instructions contained in the user's manual,
- damage occurring during shipment in transit,
- claims based upon any misrepresentations by the seller,
- products which do not have the original components as specified in the product engineering information,
- products on which the serial number has been removed or defaced.

Should any fault develop with a component of your Turbosound system, please return the product, freight pre-paid, in its original packing carton, along with proof of purchase such as the original bill of sale, and a description of the suspected fault, to your local authorised Turbosound representative. The product serial number must be quoted in all correspondence relating to the claim. Insurance is recommended as Turbosound or its representatives are not liable for loss or damage in transit.